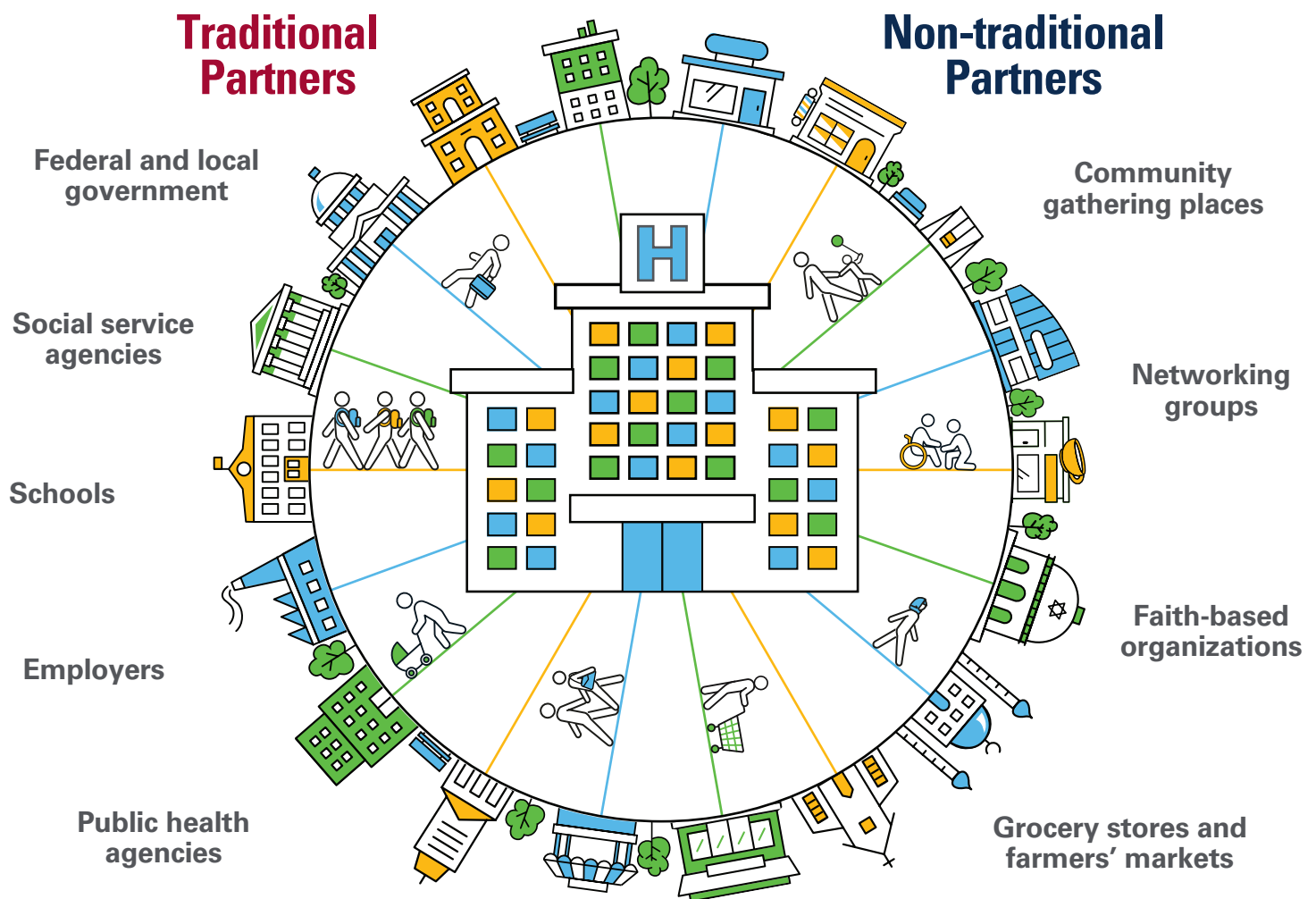


## How can hospitals collaborate effectively with their communities?

Community collaboration is one of many tools hospitals and health systems can use to advance health equity. Hospitals and health systems can serve as trusted conveners and facilitators for initiatives with traditional and non-traditional partners. Hospitals and health systems can seek unique opportunities to engage community members not typically approached for collaborative partnerships. By leveraging providers' and community assets, these partnerships can make a measurable impact toward eliminating health disparities and advancing health equity.



### Tools for the Health Equity Journey

In addition to community collaboration, other tools organizations can use to advance health equity include: **Diversity, Equity and Inclusion; Strategic Partnerships; Supplier Diversity; Investment Strategies and Research.**

To learn more about how your hospital and health system can implement actions to become more diverse, equitable and inclusive, visit [ifdhe.aha.org](http://ifdhe.aha.org).

